



MONTHLY MEMBERSHIP PROGRESS REPORT

District 3233E2

Results as of: 06/30/2019

GMT: ANIL TULSYAN

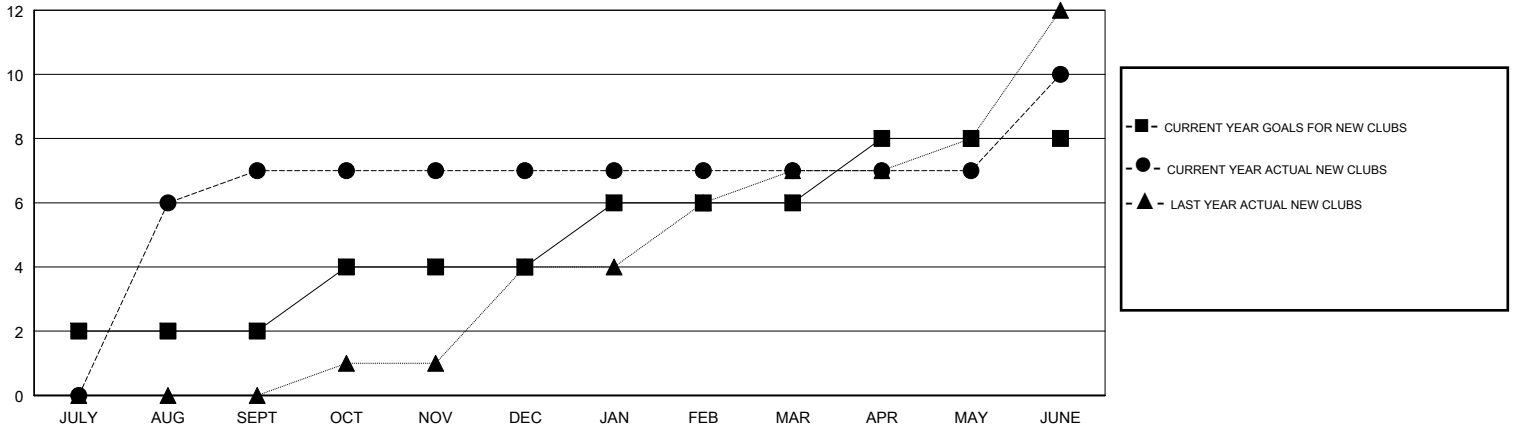
LOCATION INDIA

GMT CA

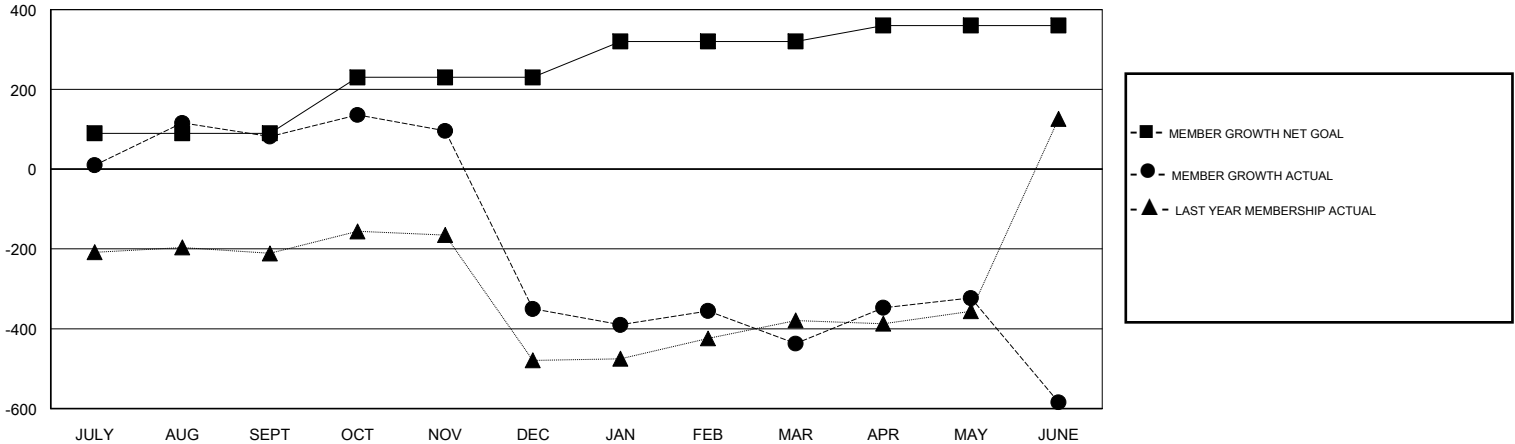
Clubs			
RESULTS FOR 2018-2019			
QUARTER	NEW CLUB GOAL	NEW CLUBS	DROPPED CLUBS
JULY/AUG/SEPT	2	7	2
OCT/NOV/DEC	2	0	13
JAN/FEB/MAR	2	0	6
APR/MAY/JUNE	2	3	2

Members			
RESULTS FOR 2018-2019			
QUARTER	MEMBER GROWTH NET GOAL	MEMBER GROWTH ACTUAL	DROPPED MEMBERS ACTUAL (including transfers)
JULY/AUG/SEPT	90	259	161
OCT/NOV/DEC	140	99	525
JAN/FEB/MAR	90	371	215
APR/MAY/JUNE	40	530	624

GOALS AND ACTUAL NEW CLUBS CUMULATIVE



GOALS AND ACTUAL MEMBERS CUMULATIVE



DROPPED CLUBS: 23	112 CLUBS OF 156 ADDED 1 OR MORE NEW MEMBERS	<u>GENDER DISTRIBUTION</u> MALE 4,443 (75.05%) FEMALE 1,477 (24.95%) Women Percentage Fiscal Year Goal: 22%
<u>DROPPED MEMBERS</u> DECEASED 10 CLUB CANCELLED 488 OTHER 1,026 TOTAL 1,524	CLICK HERE FOR CUMULATIVE MEMBERSHIP DATA	TOTAL FAMILY UNIT MEMBERS 1,935 FAMILY MEMBERS PAYING HALF DUES 1,020